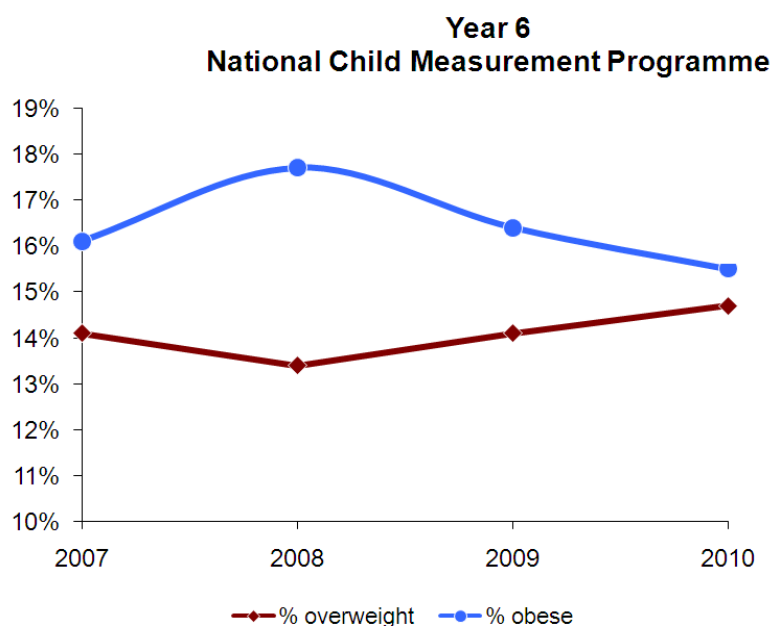


Children and Young People's Plan Performance Report - Priority Indicators

Priority Indicator	Rating
NI 056 Obesity in primary school age children in Year 6 (%)	Green
NI 059 Percentage of initial assessments for children's social care carried out within 10 working days of referral (%)	Amber
NI 065 Percentage of children becoming the subject of Child Protection Plan for a second or subsequent time (%)	Green
NI 070 Reduce emergency hospital admissions caused by unintentional and deliberate injuries to children and young people	Green
NI 069 Children who have experienced bullying (%)	Amber
NI 092 Narrowing the gap between the lowest achieving 20% in the Early Years Foundation Stage Profile and the rest	Green
NI 075 Achievement of 5 or more A*- C grades at GCSE or equivalent including English and Maths (%)	Red
NI 079 Achievement of a Level 2 qualification by the age of 19 (%)	Green
NI 102a Achievement gap between pupils eligible for free school meals and their peers achieving the expected level at Key Stage 2 (%)	Green
NI 102b Achievement gap between pupils eligible for free school meals and their peers achieving the expected level at Key Stage 4 (%)	Green
NI 104 The Special Educational Needs (SEN)/non-SEN gap - at Key Stage 2 (%)	Amber
NI 105 The Special Educational Needs (SEN)/non-SEN gap - at Key Stage 4 (%)	Green
NI 043 Young people within the Youth Justice System receiving a conviction in court who are sentenced to custody (%)	Green
NI 112 Under 18 conception rate (%)	Amber
NI 148 Care leavers in education employment or training (%)	Green
NI 116 Proportion of children in poverty	Amber
NI 117 16 to 18-year-olds who are not in education training or employment (NEET) (%)	Amber

NI 056 Obesity in primary school age children in Year 6 (%)



Source: National Child Measurement Programme

Commentary

As part of the National Child Measurement Programme (NCMP), reception (4-5 year olds) and Year Six pupils (10-11 year olds) are weighed and measured each year. The CYPF selected Year 6 obesity as a priority, in line with the Local Area Agreement 2008-11.

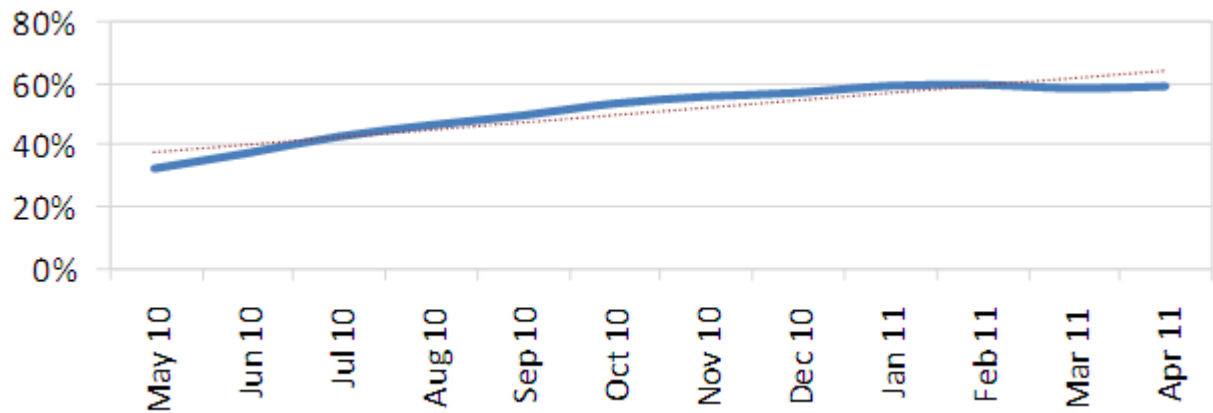
Local analysis has shown clear associations between the prevalence of overweight and obesity with various deprivation measures including the Index of Multiple Deprivation (IMD), the Income Deprivation Affecting Children Index (IDACI) and the Child Well-being Index (CWI) as well as eligibility for free school meals. Despite wide confidence limits there is significant variation in the proportion of overweight or obese children across the city; Moulsecumb, Bevendean & Coldean Children's Centre area has a statistically significant higher prevalence and Preston Park, and Knoll and Stanford Children's Centre areas have statistically significant lower prevalences (source: Joint Strategic Needs Assessment, 2011)

Encouragingly the latest Safe and Well at School Survey found that eating habits of children aged 10-14 are improving as are the levels of physical activity.

What are we doing?

The Promoting the Healthy Weight and Healthy Lives Strategy is supporting families around diet, nutrition and physical activity through a range of activities.

NI 059 Percentage of initial assessments for children’s social care carried out within 10 working days of referral (%)



Source: Children’s social care, BHCC

Commentary

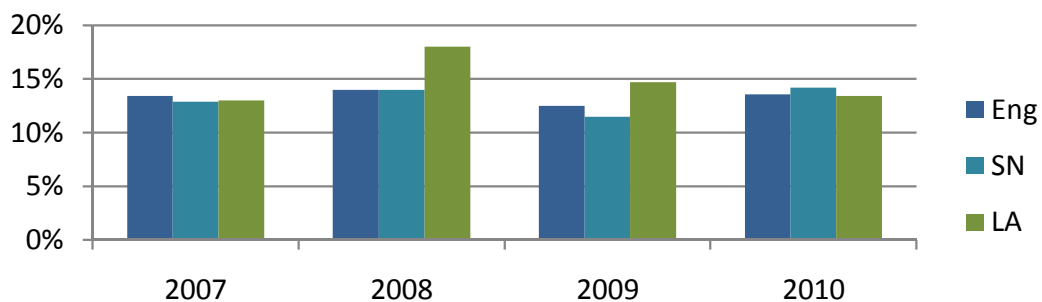
According to the Ofsted Inspection of safeguarding and looked after children services, “Performance on the timeliness of initial and core assessments has improved but performance is still lower than the England average [however] recent assessments are good and well detailed including a clear analysis of risk and protective factors. More children and young people and their families are involved in the assessment process”

From April 1 2011, the timescale changed from 7 working days to 10. Comparator data for 2009/10 based on the 7 day timescale shows that Brighton and Hove achieved 64% within timescales in line with the statistical neighbour average of 64.8% (hence the amber rating) but below the England average of 67.1%

What are we doing?

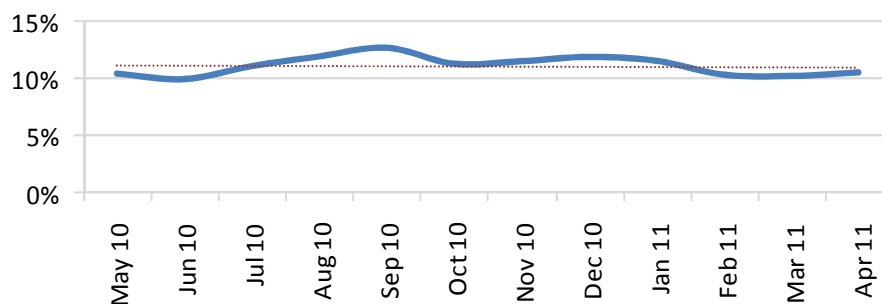
An improvement action plan has been developed following the inspection of safeguarding and looked after children services and is being presented to Cabinet on 14th July 2011

NI 065 Percentage of children becoming the subject of Child Protection Plan for a second or subsequent time (%)



Source: Department for Education

Chart showing monthly results



Source: Children's social care, BHCC

Commentary

The end of year figure for 2009/10 for this indicator was 13.4%, an improvement from the previous end of year figure of 14.7% and below the national average of 13.6% and 14.2% for our statistical neighbours. The proportion of children becoming subject of a child protection plan for a second or subsequent time is 10% as at 30th April 2011. Some re-registrations are essential in responding to adverse changes in circumstance. Performance between 10 and 15% was considered 'very good' under the old Performance Assessment Framework banding, and so current performance is within this range.

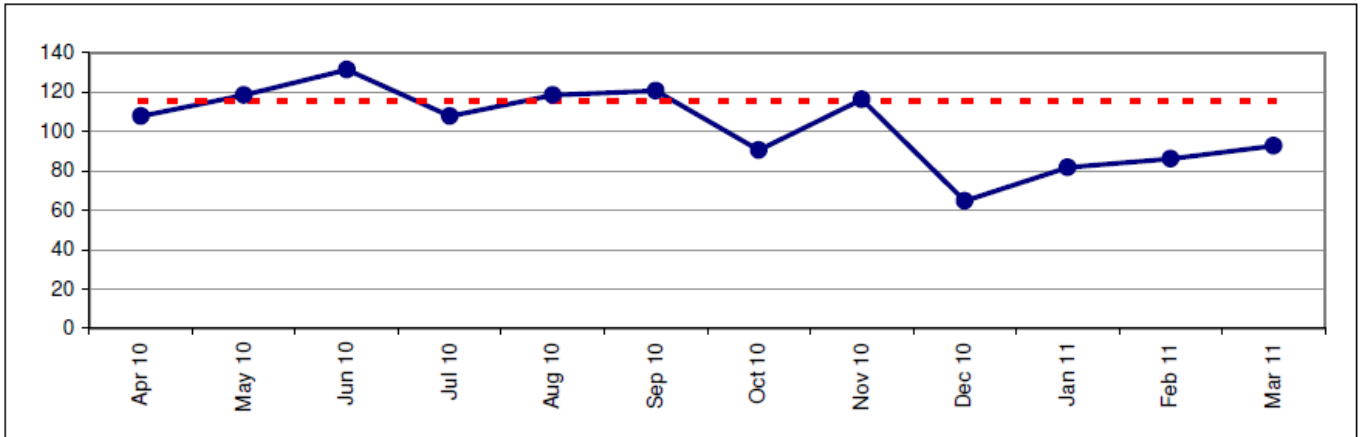
What are we doing?

An improvement action plan has been developed following the inspection of safeguarding and looked after children services and is being presented to Cabinet on 14th July 2011

NI 070 Reduce emergency hospital admissions caused by unintentional and deliberate injuries to children and young people



Chart showing rate of admissions per 100,000 (2010/11)



Source: Brighton & Hove Primary Care Trust

2010/2011

Actual:	Apr 10	May 10	Jun 10	Jul 10	Aug 10	Sep 10	Oct 10	Nov 10	Dec 10	Jan 11	Feb 11	Mar 11	Year to date
No of emergency admissions	50	55	61	50	55	56	42	54	30	38	40	43	574
Resident population aged under 18	46400	46400	46400	46400	46400	46400	46400	46400	46400	46400	46400	46400	46400
Emergency admissions per 100,000 population	107.8	118.5	131.5	107.8	118.5	120.7	90.5	116.4	64.7	81.9	86.2	92.7	1237.1

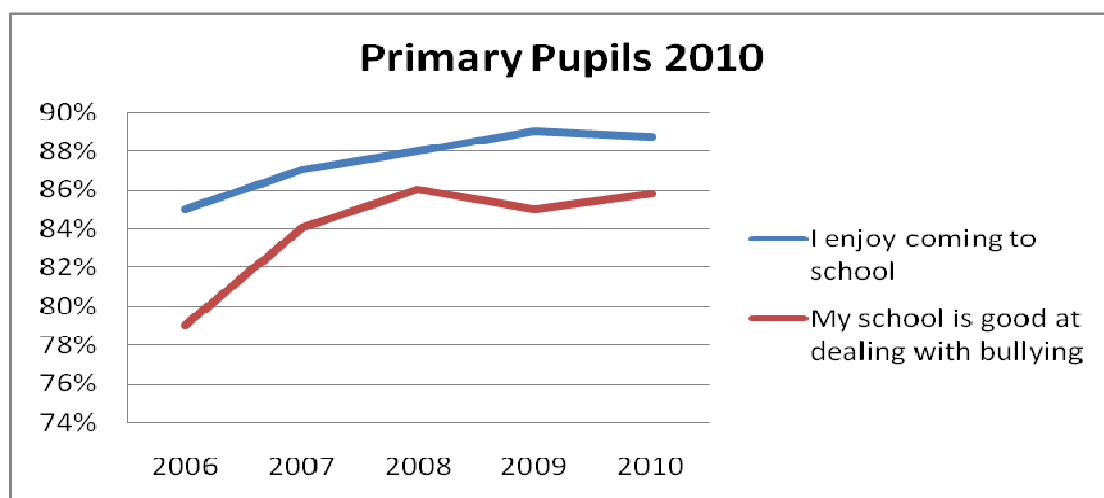
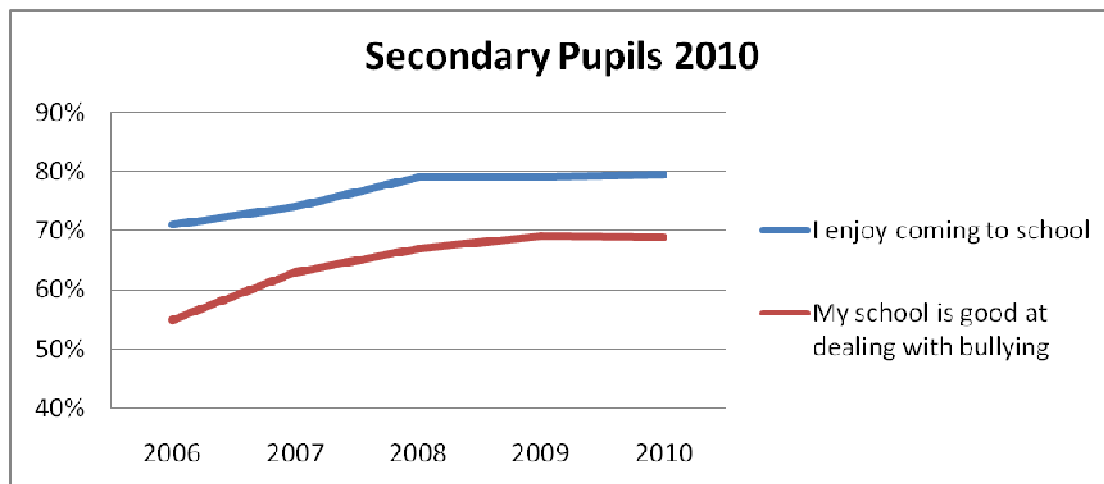
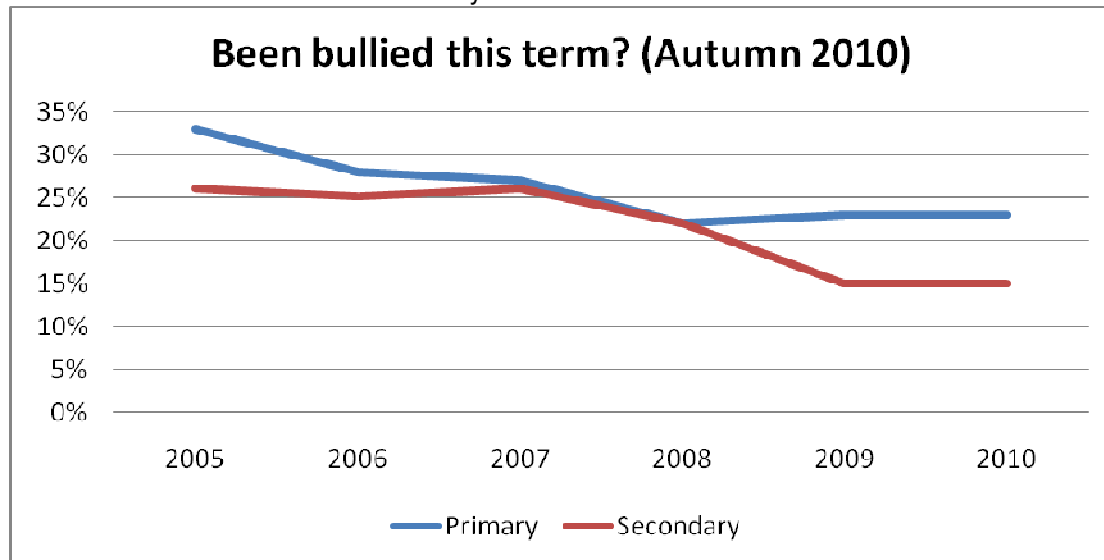
Commentary

The numbers of admissions has varied from 715 in 2008/9 to 469 in 2009/10 and 574 in 2010/11. Performance is rated 'green' by the PCT.

NI 069 Children who have experienced bullying (%)



Source: Safe and Well at School Survey



Commentary

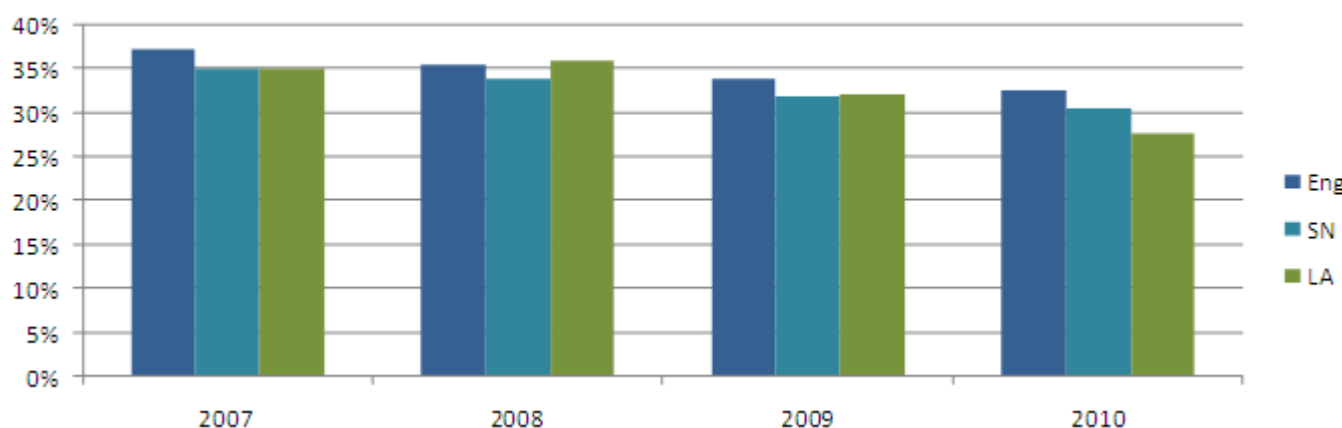
The Safe and Well School Survey has shown a significant decrease in reported bullying in primary and secondary schools since 2005. However, the data for the last two years is similar across all measures.

What are we doing?

The Healthy Schools Team works in partnership with schools and the community and voluntary sector to offer schools:

- Access to an annual Safe and Well at School Survey to monitor anti-bullying work in schools
- Support for whole school approaches to health and wellbeing (Healthy Schools Programme)
- Consultancy related to anti-bullying policy development
- Consultancy and training related to PSHE and citizenship curriculum development (preventative work)
- Consultancy and training related to the implementation of social and emotional aspects of learning (SEAL) (preventative work)
- Training related to identifying and challenging racist incidents and lesbian gay, bisexual and transgender bullying
- Information and resources related to anti-bullying, anti-bullying week and other aspects of the equalities calendar i.e. Black History Month, Refugee Awareness Week through Pier2Peer

NI 092 Narrowing the gap between the lowest achieving 20% in the Early Years Foundation Stage Profile and the rest



Commentary

In 2010 significant further improvement was made in narrowing the gap between the lowest achieving 20% and the rest, well above figures for England and the statistical neighbours.

What are we doing?

The long term strategy for improving outcomes for children includes the following areas of work:

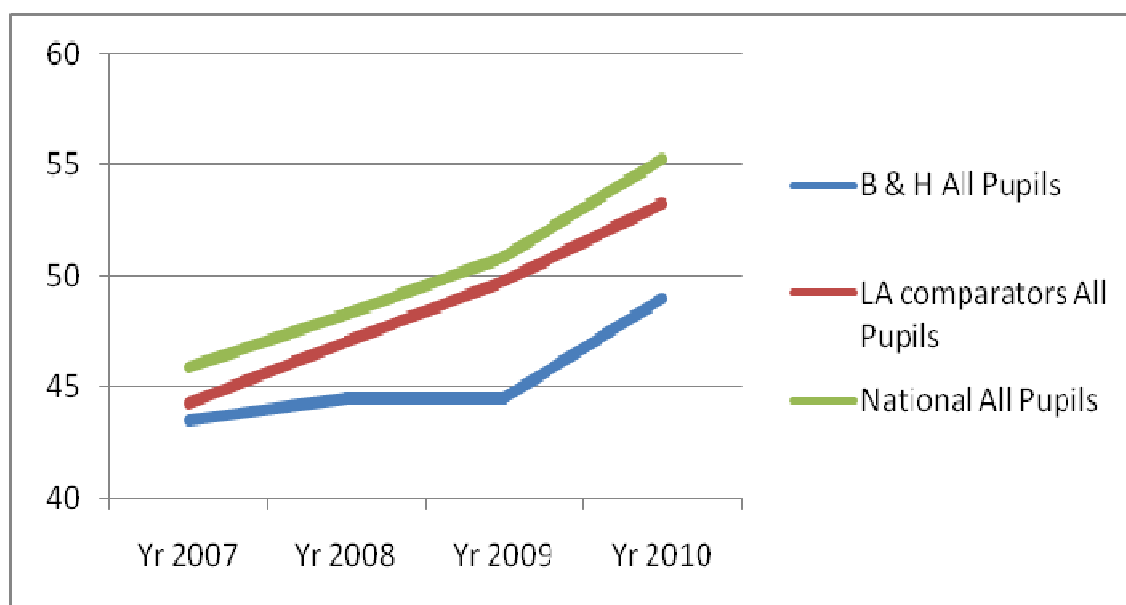
- Children Centres and Sure start programme across the city
- Quality Improvement programme with all registered settings
- Comprehensive training programme for practitioners to raise the quality of provision
- Specialist services for children with special needs and English as an additional language
- Targeted work: Additional support for settings and schools who are at risk of underachieving with a tight focus on tracking children's progress.
- Communication, Language and Literacy programme
- Every Child a Talker programme

NI 075 Achievement of 5 or more A* - C grades at GCSE or equivalent including English and Maths (%)



Source: Department for Education

	2007	2008	2009	2010
B & H	43.5	44.5	44.5	49
LA comparators	44.3	47.1	49.8	53.3
National	45.9	48.3	50.9	55.3



Commentary

Overall educational attainment at nursery & primary school tends to be the same as, or above, national averages, but there is a significant decline by GCSE age when we drop below the national average. 49 per cent of our children achieved five GCSEs graded A* to C, including English & Maths, compared to 55 per cent at the national level in 2010. By gender this is 47 per cent of our boys and 51 per cent of our girls, compared to 51 per cent of boys and 59 per cent of girls nationally.

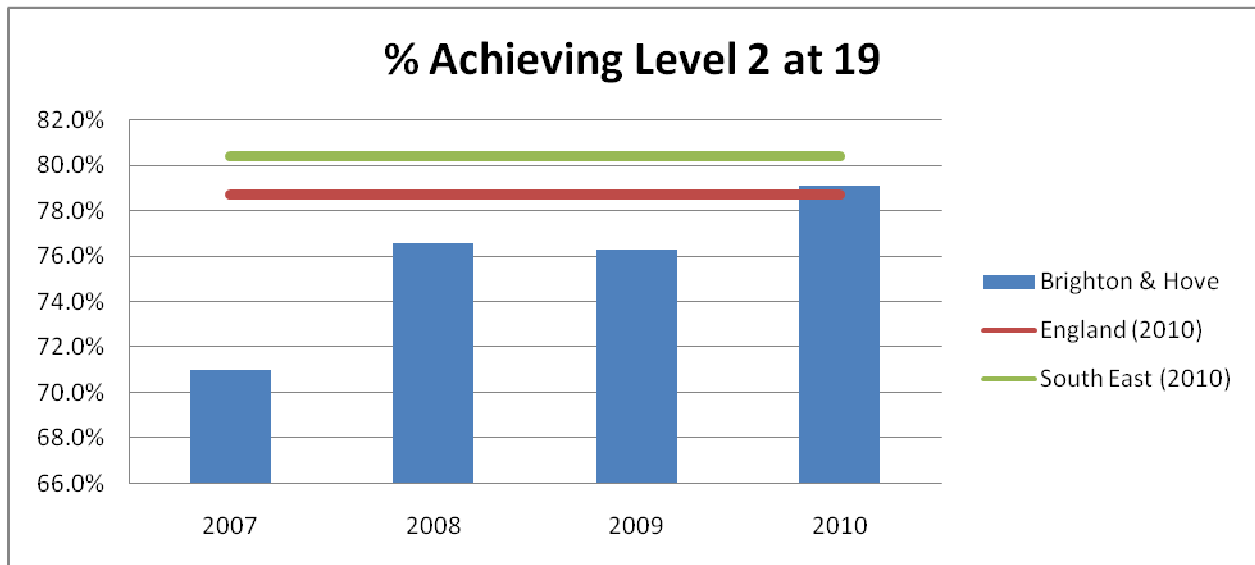
What are we doing?

The Raising Achievement Plan sets out the vision and actions necessary to transform standards in secondary schools and aims for the city's schools to:

- be in the upper quartile for our statistical neighbours in achievement of 5+ A*-C including English and Maths by 2014
- achieve 80% of teaching rated as good or better
- every school to be at least good with outstanding features and outstanding for capacity to improve
- be in the upper quartile for our statistical neighbours for attendance
- demonstrate that gaps have progressively closed in the secondary schools, in relationship to attainment between significant groups

Secondary Schools have been supported by the Council to develop a partnership across the city and have begun to create joint plans for school improvement. The Director has instigated a Secondary Commission which is due to publish its recommendations for Secondary School improvement before the schools summer break.

NI 079 Achievement of a Level 2 qualification by the age of 19 (%)



Source: Department for Education

Commentary

Improvement in 2010 has brought Brighton and Hove in line with the national average, although below the south east. Rates of participation in learning in B&H are relatively high, with around 95% of 16 year olds and 92% of 17 year olds continuing in learning or training in 2010. The Raising the Participation Age (RPA) policy means that current Y9 students are expected to continue in learning or training until the end of the 2013/14 academic year, and current Y8 students are expected to continue until their 18th birthday, during the 2015/16 academic year

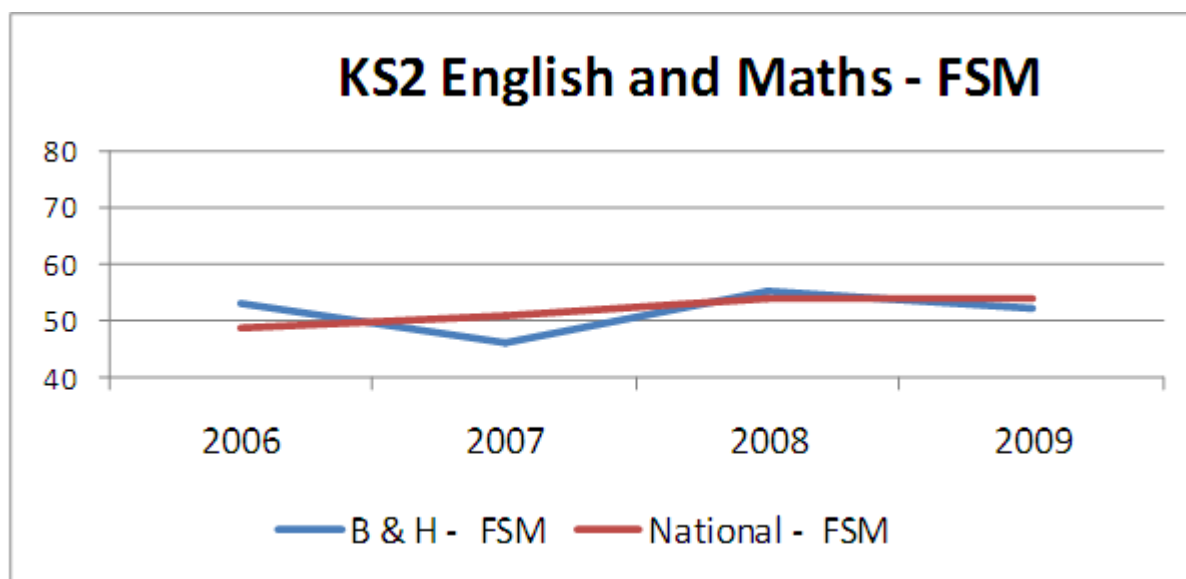
What are we doing?

We have successfully bid for funding from the DfE to participate in a national RPA project to identify the RPA challenges for the city and to develop provision which will ensure that there is a relevant offer for all young people across the city when the RPA policy comes into force.

NI 102a Achievement gap between pupils eligible for free school meals and their peers achieving the expected level at Key Stage 2 (%)

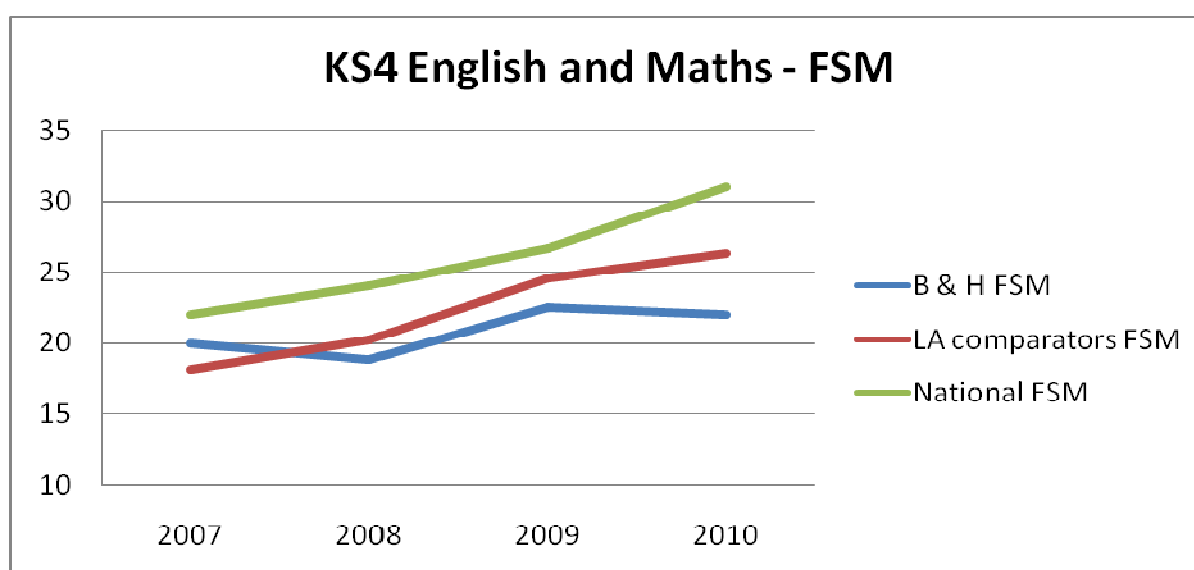


Note: 2010 data for Key Stage 2 is not available due to the national test boycott



Free School Meals Gap KS2	2006	2007	2008	2009
Brighton and Hove	53	46.0	55.0	52.0
National (England)	48.9	51.0	54.0	54.0

NI 102b Achievement gap between pupils eligible for free school meals and their peers achieving the expected level at Key Stage 4 (%)



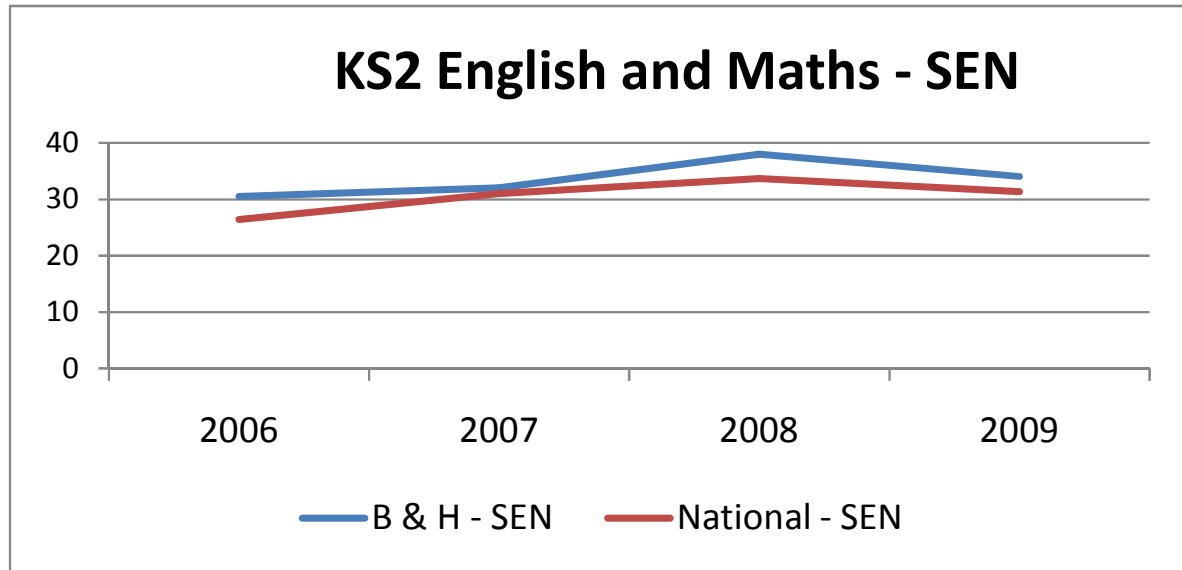
Free School Meals Gap KS4	2007	2008	2009	2010
Brighton and Hove	20	18.8	22.5	22

LA Comparators	18.1	20.2	24.6	26.3
National (England)	22	24	26.7	31

NI 104 The Special Educational Needs (SEN)/non-SEN gap – at Key Stage 2 (%)

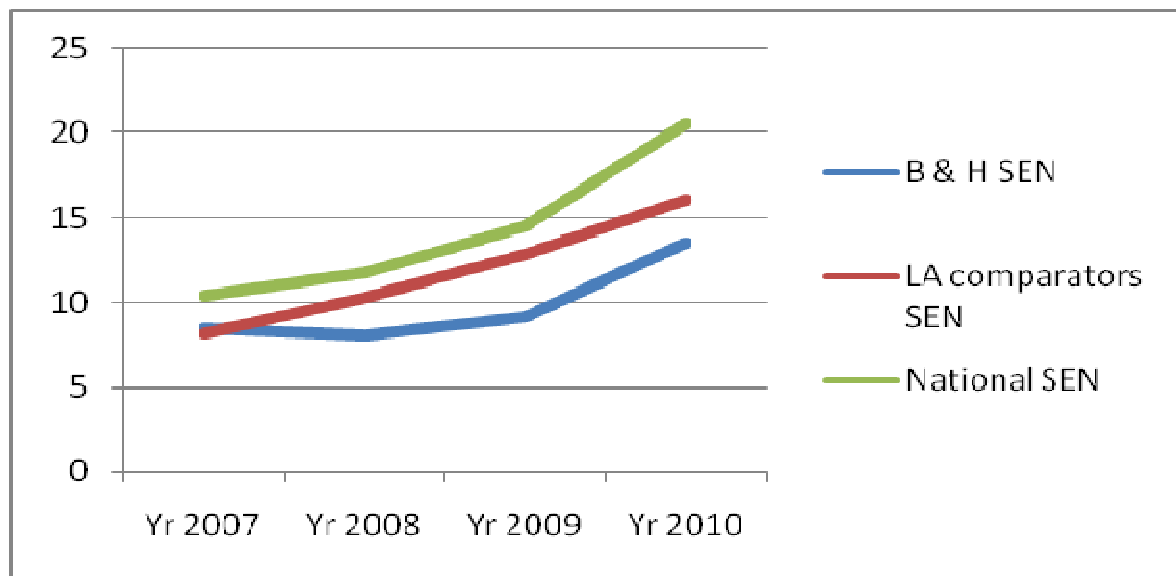


Source: Department for Education



SEN Gap KS2	2006	2007	2008	2009
Brighton and Hove	30.5	32.0	38.0	34.0
National (England)	26.4	31.0	33.7	31.3

NI 105 The Special Educational Needs (SEN)/non-SEN gap – at Key Stage 4 (%)



SEN Gap KS4	Yr 2007	Yr 2008	Yr 2009	Yr 2010
B & H SEN	8.5	8.1	9.2	13.5
LA comparators SEN	8.2	10.3	12.9	16.1

NI 043 Young people within the Youth Justice System receiving a conviction in court who are sentenced to custody (%)



Custodial sentences to make up no more than 6% of all sentences imposed by the courts

2010/11	Direction of travel	South East	England	National Rank (out of 142)
4.60%	→	3.50%	5.60%	61

Source: Youth Offending Service

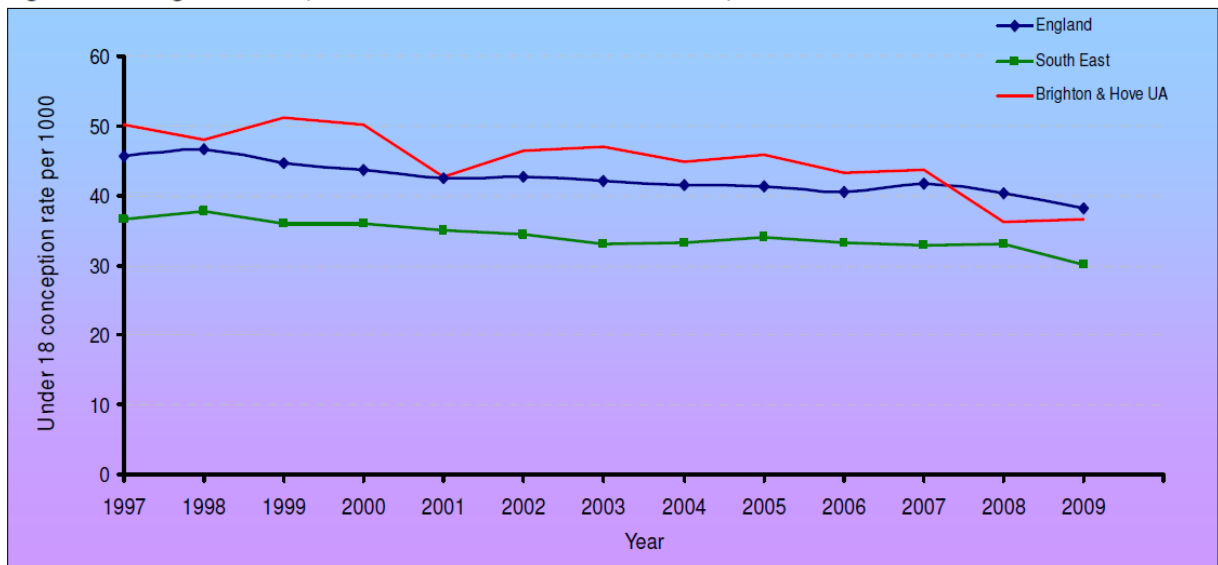
What are we doing?

- Working intensively with young people released from custody to reduce the risk of re-offending and further custodial sentences
- Undertaking regular quality assurance of Pre-Sentence Reports and ensure that where the young person is at risk of custody, robust alternatives are presented
- Ensuring that young people contribute to their intervention plans
- Providing an enhanced service to DYO's (Deter Young Offenders), who present the highest risk of re-offending, through the new Police Officer post
- Improving partnership input and intelligence sharing to the MoR (Management of Risk) meeting

NI 112 Under 18 conception rate (%)



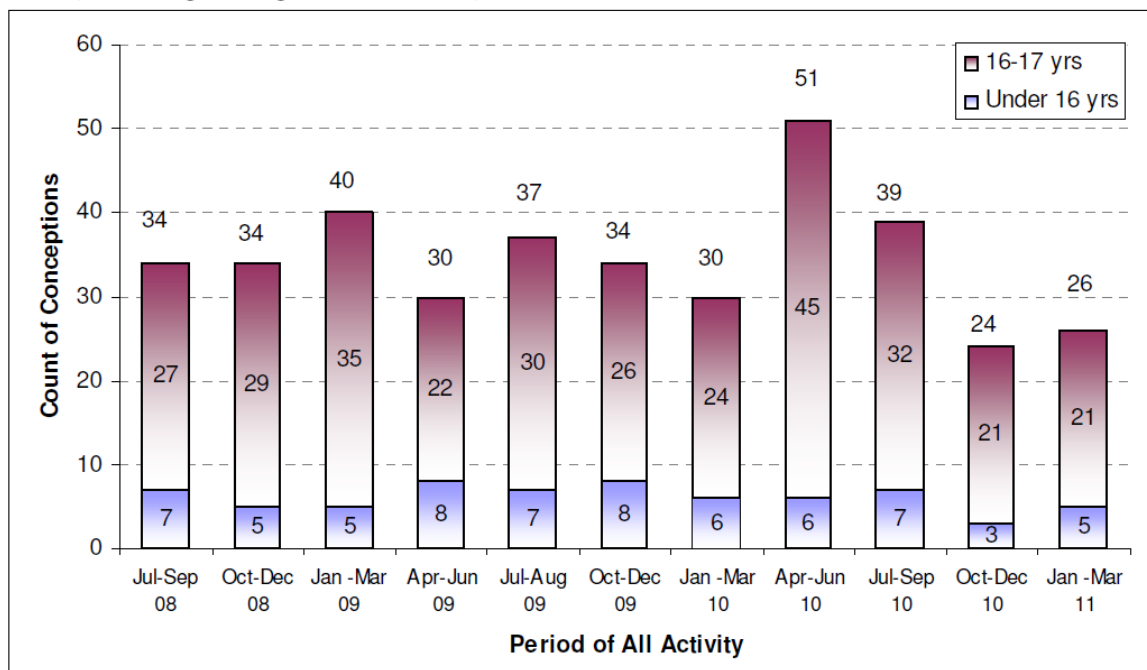
Figure 4.1 Regional comparisons of the annual u-18 conception rates, 1998-2009



Source: Office for National Statistics 2011

Note: Rate per 1000 females aged 15-17

Figure 5.1 Number of Terminations and Births in under 18s, by period of activity for those usually residing in Brighton & Hove by quarter



Source: Brighton and Sussex University Hospitals & BPAS

Commentary

The teenage pregnancy conception rates are calculated from birth registrations figures which explains the national reporting time period. Figure 4.1 provides our local and nation comparisons. We are able to predict local conception rates based on locally reported termination counts and birth counts as shown in figure 5.1..

Performance against the 45% reduction by 2011 shows improvement in 2007 – 2009 which brought Brighton and Hove below the national rates and more in line with the SE rates. Local activity indicates that the performance since 2009 has become more static.

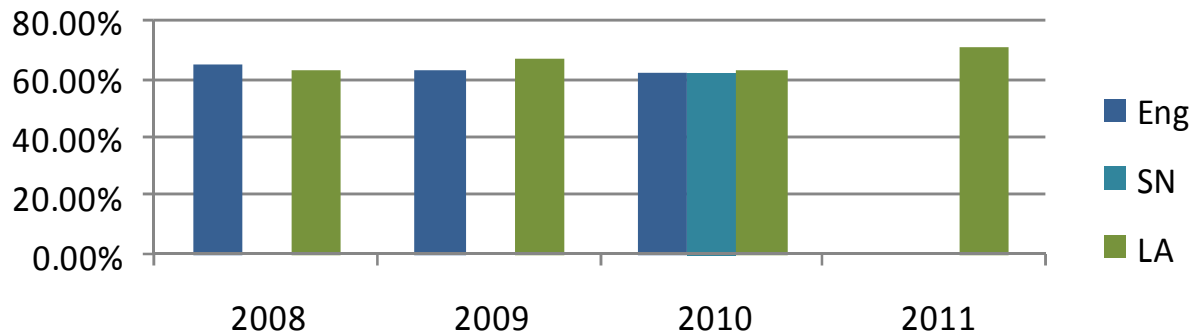
What are we doing?

The Teenage Pregnancy and Substance misuse performance manages all contracts and internal agreements against the Teenage Pregnancy Action plan 2009 – 11. This plan is reviewed and improved annually during our refresh period.

Key areas of activity include:

- Providing branded and accessible contraception and sexual health services (CASH) from Morley Street, schools, primary care and pharmacy.
- Provide early identification and targeted intervention for young women involved in sexual and substance misuse, risk taking behaviour.
- Ensuring young women involved with YOS and Leaving care have full access to CASH services
- Support young women through the pathway attached to termination services
- Implement a media and communication strategy that uses social media techniques.
- Reviewing the effectiveness of the pathway for young parents
- Explore potential pilot of Family Nurse Partnership (support for first time mothers)
- The success of the Brighton & Hove's Teenage Parent Supported Housing Anti-poverty Pilot means that there will be a continuation of 22 units of medium to high level support for 16-21 year olds with a focus on the under 19s

NI 148 Care leavers in education employment or training (%)



Commentary

The provisional outturn figure for 2010/11 is 70.8% which is above the national and statistical neighbour average of 62.1% for 2009/10 and an improvement from 63% last year. It is not possible to calculate a statistical neighbour average for previous years due to the scores being suppressed for some local authorities in our statistical neighbour group.

What are we doing?

The Corporate Parenting Board performance manages outcomes for looked after children.

An improvement action plan has been developed following the inspection of safeguarding and looked after children services and is being presented to Cabinet on 14th July 2011.

NI 116 Proportion of children in poverty



Our child poverty rate is in line with the national level but significantly higher than the regional level. 22 per cent of our dependent children (10,555) aged up to 19 lived in poverty in 2008, compared to 21 per cent at the national level and 15 per cent in the South East. East Brighton had the highest proportion of dependent children & young people in poverty at 47 per cent in 2008; Moulsecoomb & Bevendean had 45 per cent.

What are we doing?

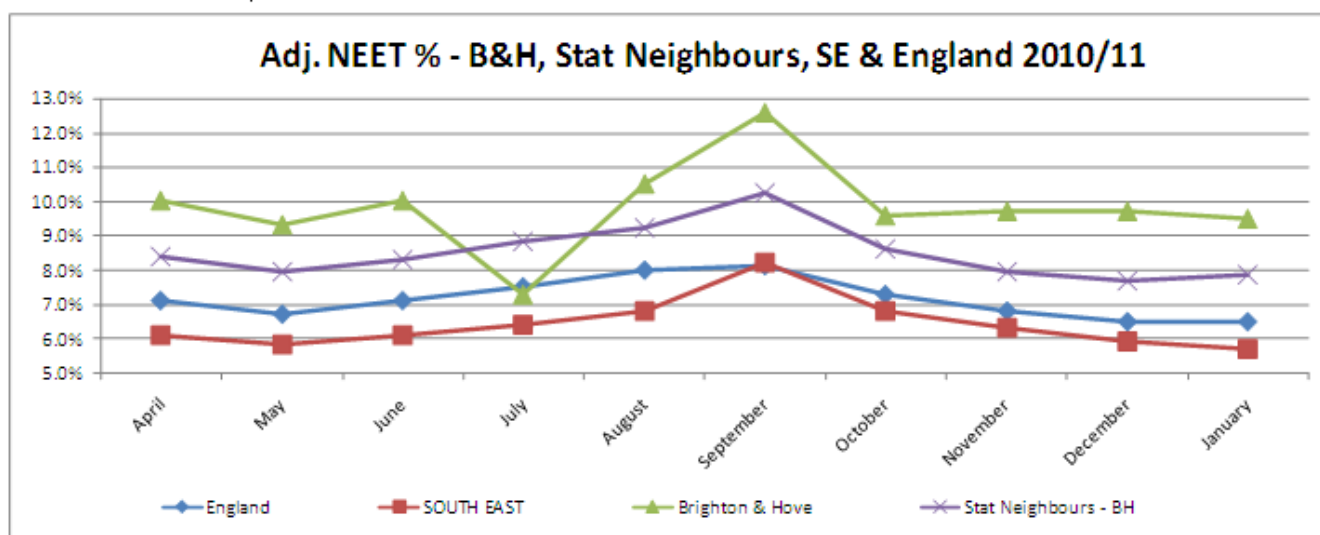
Child Poverty Needs Assessment completed April 2011
Child Poverty Strategy on track to be completed September 2011

N.B. 2009 data will be available in Autumn 2011

NI 117 16 to 18-year-olds who are not in education training or employment (NEET) (%)



Source: Department for Education



In May 2011, there were 418 young people aged 16 – 18 who were NEET in B&H – of these, 62 were ‘not available for the labour market’ for reasons such as pregnancy, illness and supporting family either as carers or as teenage parents; this is a relatively low figure, and in most months around 500 young people are NEET in the city. The overall NEET rate for 16 – 18 in May was 7.6% - this includes 18 year olds.

From 1st April 2011 the way that the Department for Education record the figures for NEET, Unknown and the Total Cohort numbers has been revised. For those in the post 16 cohort the reporting will now be based on residency rather than where they are educated.

See the linked “Level 2” indicator above.

